

## Ways to Give

**Volunteer** - Our organization has a wide range of opportunities for individuals and groups to donate time. Volunteers are the "Light in Our Beacon of Hope."

**Make a Donation** - A one-time or ongoing gift makes a difference to local childhood cancer families. Donations of any amount are always appreciated and are 100% tax deductible. Send checks to the address on this brochure or donate online at: [www.ChildCancer.org](http://www.ChildCancer.org).

**Memorial or Honorary Gifts** - Donate a gift in the memory of a loved one, to honor accomplishments, or celebrate special events or holidays.

**Sponsor an Event** - Throughout the year KRM hosts several events with sponsorship opportunities. Contact us for details.

**Partner with Us** - Cause-related marketing campaigns with KRM can benefit your business.

**Corporate Giving** - Consider allocating a portion of your corporate giving/philanthropic funds to KRM.

**Company Giving/Matching Programs** - Contribute to KRM on a regular basis, personally or through your company's United Way campaign or other community giving program.

**Charitable Programs** - We gratefully accept donations of stock, life insurance policies, charitable remainder trusts, gift annuities, or a charitable bequest in a will or trust.

**Give to our Child Cancer Journey Campaign** - learn more at: [www.ChildCancerJourney.org](http://www.ChildCancerJourney.org).



"Be A Beacon of HOPE for Children with Cancer"

## Events

National St. Baldrick's Head Shaving for Childhood Cancer (March)

Ridin for Survivin' - Aubrey Hoskinson Memorial Poker Run (April)

Sacramento Capitals World Team Tennis Kick-off Party - Nordstrom/Galleria Roseville (July)

"Chipping Away at Childhood Cancer"® Annual Golf Tournament (August)

Morton's VIP Night (September)

National Childhood Cancer Awareness Month (September)

*Visit our website for dates and details of all our upcoming events.*



## Contact Us

Please help our children in the fight against childhood cancer by donating to:

**The Keaton Raphael Memorial for Neuroblastoma, Inc.**

**Mailing Address:**

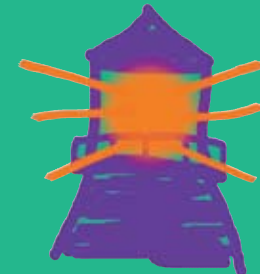
#262, 1079 Sunrise Ave., Ste. B  
Roseville, CA 95661  
Phone: 916-784-6786  
Fax: 916-784-3384  
E-mail: [Info@ChildCancer.org](mailto:Info@ChildCancer.org)

[www.ChildCancer.org](http://www.ChildCancer.org)



All donations are tax deductible.

"A Beacon of HOPE  
for Children with  
Cancer"



**The Keaton Raphael Memorial**

## Why our Local Children & Their Families Need Your HELP...

### Our Story:

On February 20, 1998, Kyle and Robyn Raphael lost their 5-year-old son, Keaton, to a deadly childhood cancer known as Neuroblastoma (cancer of the nervous system). Keaton's nine-month battle included very aggressive treatments including seven cycles of chemotherapy, numerous surgeries, high-dose body irradiation and two bone marrow transplants.

In March 1998, the Raphael's founded this Memorial in Keaton's honor to create awareness about this devastating disease and make a positive impact in our community for other families fighting the battle.

### Our Mission:

To facilitate support services for childhood cancer families by providing financial resources and developing partnerships within the local community.



### Childhood Cancer Facts:

- Cancer is the #1 disease-related killer of children under the age of 15 years.\*
- Cancer kills more children each year than juvenile diabetes, cystic fibrosis, congenital anomalies, pediatric AIDS and asthma COMBINED! Shockingly, childhood cancer receives the least amount of research funding.\*
- Each year, approximately 150 children in the Greater Sacramento area are diagnosed with some form of childhood cancer.
- Childhood cancer families experience a wide range of emotional, psychological and economic impacts. It is estimated that families will have an additional annual expense of \$40,000 even if the child's illness is covered by insurance.

\*CureSearch

## How We Help

### Our Commitment to Help:

The Keaton Raphael Memorial is a private 501 c3, not for profit organization that assists local childhood cancer patients and their families through:

#### Patient Care Fund

Our Patient Care Fund supports programs and services that directly impact the quality of life for childhood cancer patients and their families undergoing treatment in Northern California.

#### Family Grants

Our Family Grants are available to childhood cancer patients and their families who reside in Northern California and are being treated at an accredited institution in Northern California.

The goal of the program is to alleviate some of the family's financial burden by providing direct financial assistance and resources. Although we understand we cannot meet a family's entire financial need, the gesture is intended to provide the family HOPE that they are not alone in this battle and link them into the childhood cancer community of support.

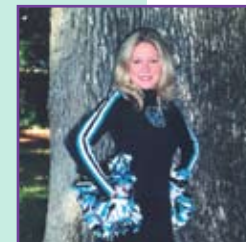
Childhood cancer patients in Northern California are referred to us by medical staff, caring friends or families, or they may self-refer. Please contact us to refer a family.



*"Just wanted to thank you so very much for the amazing care package you sent Riley. Your generous grant money will go to the hospital and make a dent on our outstanding balance we have with them. Enjoy this photo of Miss Riley that was taken recently on a trip to Lake Tahoe. She's a very sweet little girl who has gone through quite a lot for such a young life. Thanks for all you do to make this world a better place!"*

*-- Love Riley's Parents*

*"The lessons of Keaton's life continue to inspire us in ways we never dreamed possible."*



*"Thank you for the compassionate work you do for these families."*

*-- Pam, Sacramento Area Fire Fighters*

#### Research Funding

"Save a Child, Invest in a Cure" remains our founder's quest. KRM continues to invest in local and national research projects. Research is the key to finding a cure for our children.

#### Advocacy

Since 2000, founder and executive director, Robyn Raphael has been the California team leader and parent advocate for CureSearch/National Childhood Cancer Foundation, visiting state legislators to advocate for increased research funding for childhood cancer.

As a local advocate for comprehensive services, KRM has partnered with local medical institutions to initiate projects that directly benefit childhood cancer families in Northern California.

#### Education

Educating our communities about childhood cancer remains a top priority for us. Knowing the facts helps people understand the urgency to assist families in our community and invest in a cure.

#### We educate our communities by:

- Distributing gold ribbon pins with facts about childhood cancer (more than 20,000 distributed to date).
- Coordinating national childhood cancer awareness campaigns and public service announcements during Childhood Cancer Awareness Month (September).